

CERTIFICATE OF LOCATION OF GOVERNMENT CORNER

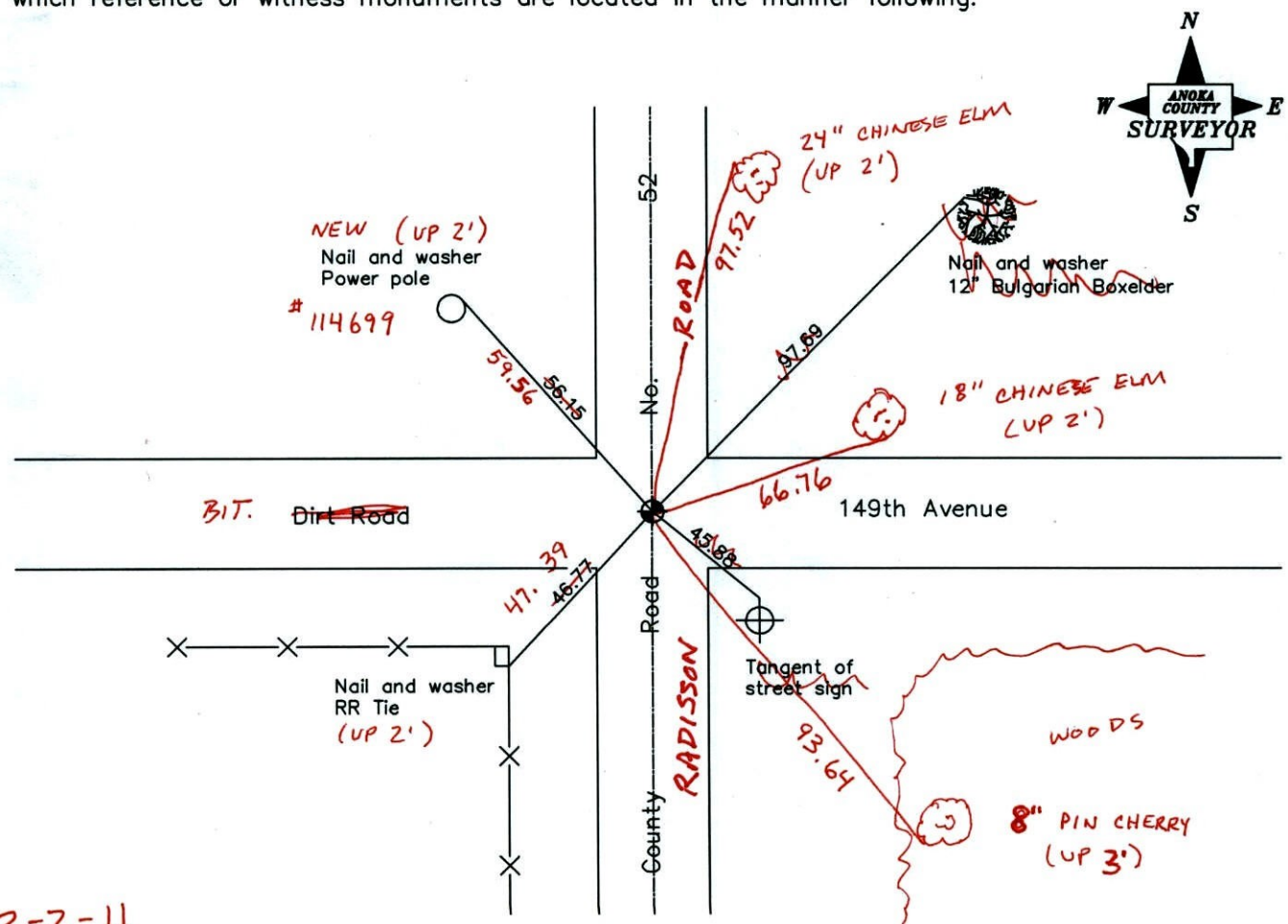
County of Anoka State of Minnesota

North 1/4 Corner of Sec. 28 Township 32 Range 23

I hereby certify that on the 6th day of July, 1960, I found the described corner which was evidenced by a granite monument

and I further certify that to perpetuate the location of said corner, I did, at the exact location thereof, place a permanent marker consisting of a cast iron monument

which reference or witness monuments are located in the manner following:



3-2-11
BK-SS
T/T
Revised date

11/20/91
7/31/96
11/30/01

N.A.D. 1983 Coordinates
(1996 adjustment)

County Project Coordinates	State Plane Coordinates
Northing <u>174878.2240</u>	Y _____
Easting <u>513510.0289</u>	X _____

Date 11/30/01

CERTIFICATE OF LOCATION OF GOVERNMENT CORNER

County of Anoka

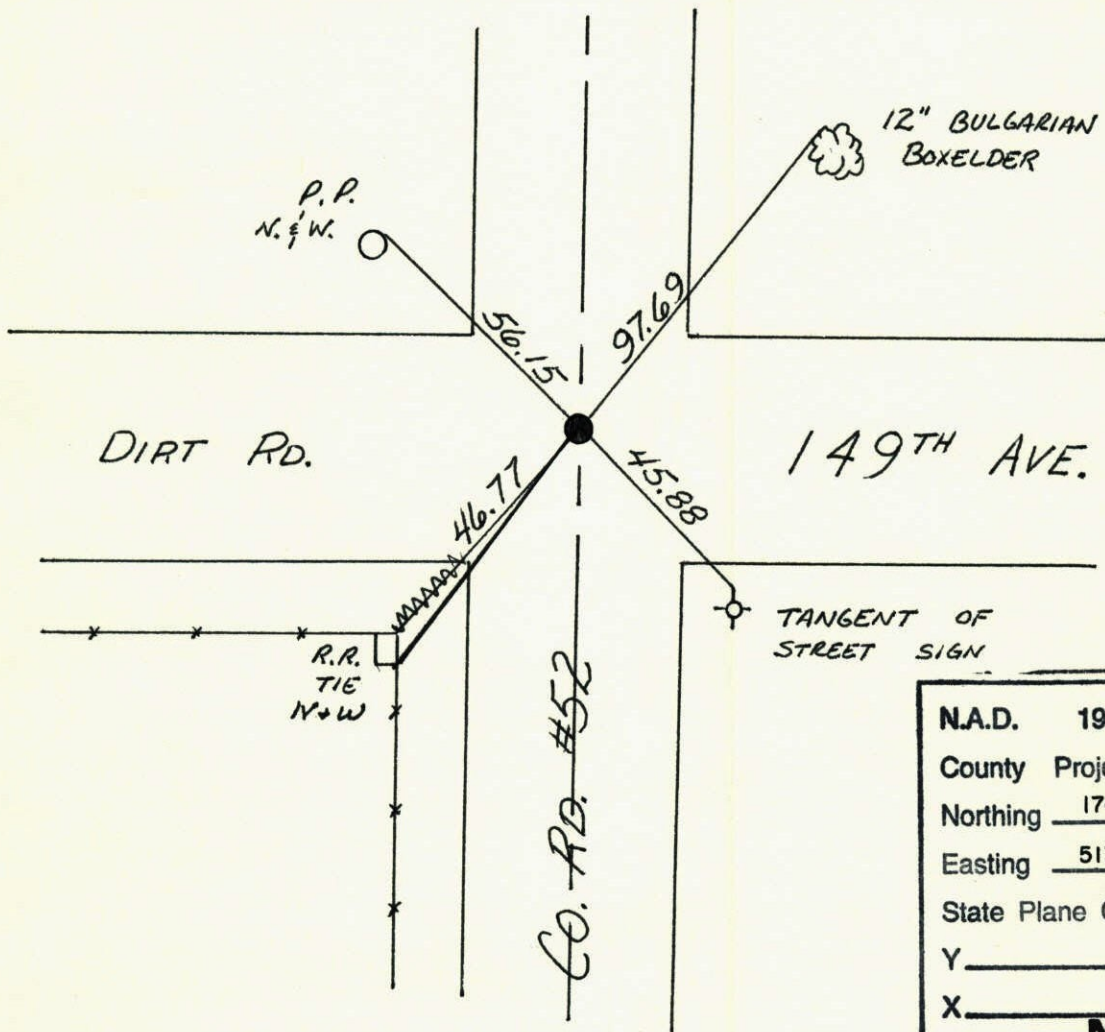
State of Minnesota

NORTH QTR. Corner of Sec. 28 Township 32 Range 23

I hereby certify that on the 6 day of JULY, 1960, I found the described corner which was evidenced by GRANITE MON.

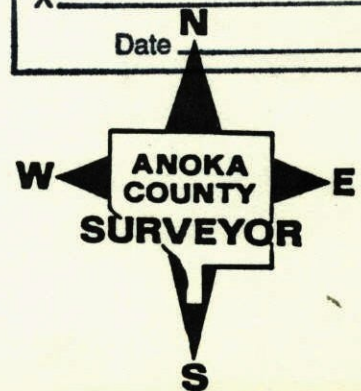
and I further certify that to perpetuate the location of said corner, I did, at the exact location thereof, place a permanent marker consisting of CAST IRON MON.

which reference or witness monuments are located in the manner following:



N.A.D.	1983	Co-ordinates
County	Project	Co-ordinates
Northing		<u>174878.2240</u>
Easting		<u>513510.0289</u>
State Plane Co-ordinates		
Y		_____
X		_____
Date	_____	

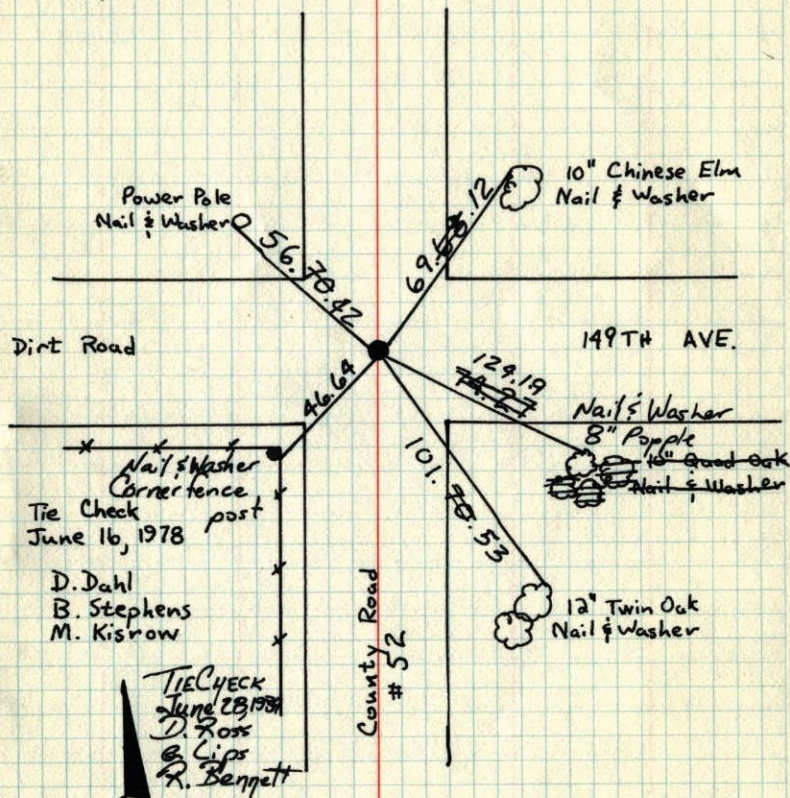
Revised date	Revised date	Revised date
1-25-91		
11-20-91		
7-31-96		



N 1/4 COR. SEC. 28 - T. 32, R. 23

Granite Mon. down 2' ±. Placed
Cast Iron Mon. on top. flush.
PK's 2.00' North & East.

July 6, 1960
Bill Rogers
Randy Carlson



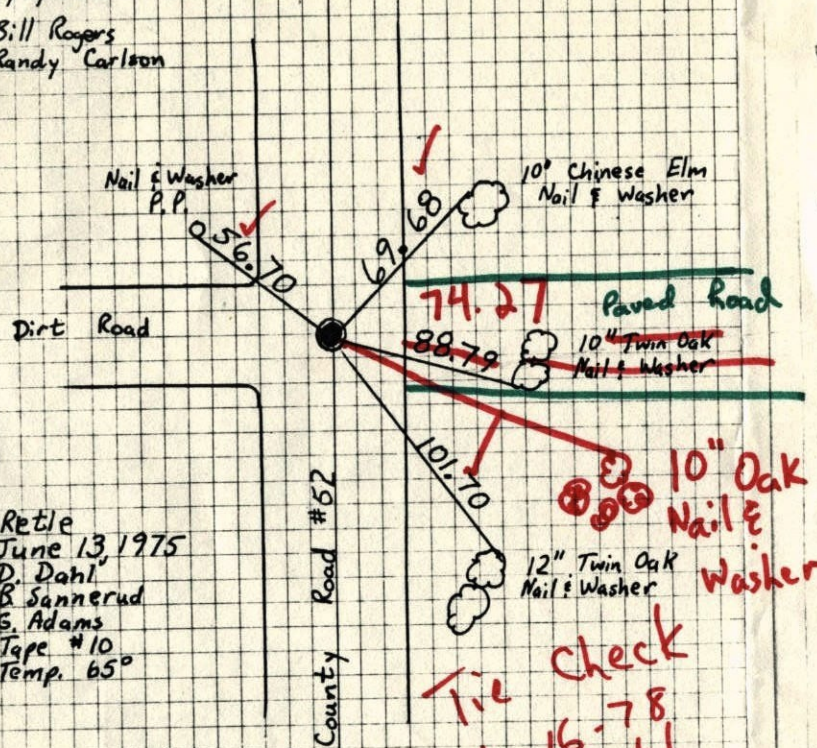
TEMPERATURE CORRECTED
AND HORIZONTALLY
TAPED MEASUREMENTS

ROLAND W. ANDERSON
COUNTY SURVEYOR
ANOKA COUNTY, MINNESOTA

N 1/4 Cor. Sec. 28 - T. 32 - R. 23

Granite Mon. down 2'
Placed Cast Iron Mon. flush
PK's 2.00' North & East

7/6/60
Bill Rogers
Randy Carlson



Retile
June 13, 1975
D. Dahl
B. Sannerud
G. Adams
Tape #10
Temp. 65°

Tie Check
6-16-78
D. Dahl
M. Kisrow
B. Stephens
#2

ROLAND W. ANDERSON
COUNTY SURVEYOR
ANOKA COUNTY, MINNESOTA

TEMPERATURE CORRECTED
AND HORIZONTALLY
TAPED MEASUREMENTS

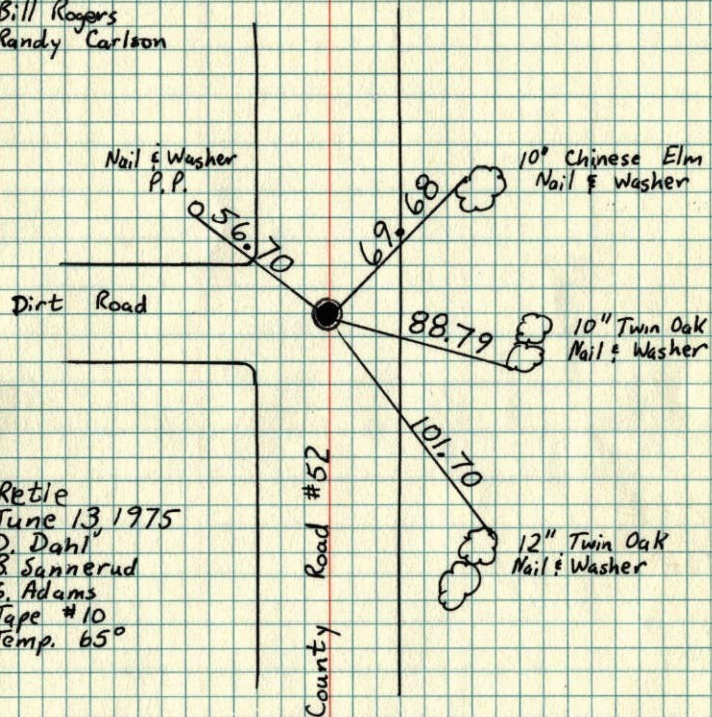
850

N¹/₄ Cor. Sec. 28 - T. 32 - R. 23⁹⁶

Granite Mon. down 2'
Placed Cast Iron Mon. flush
PK's 2.00' North & East

7/6/60

Bill Rogers
Randy Carlson



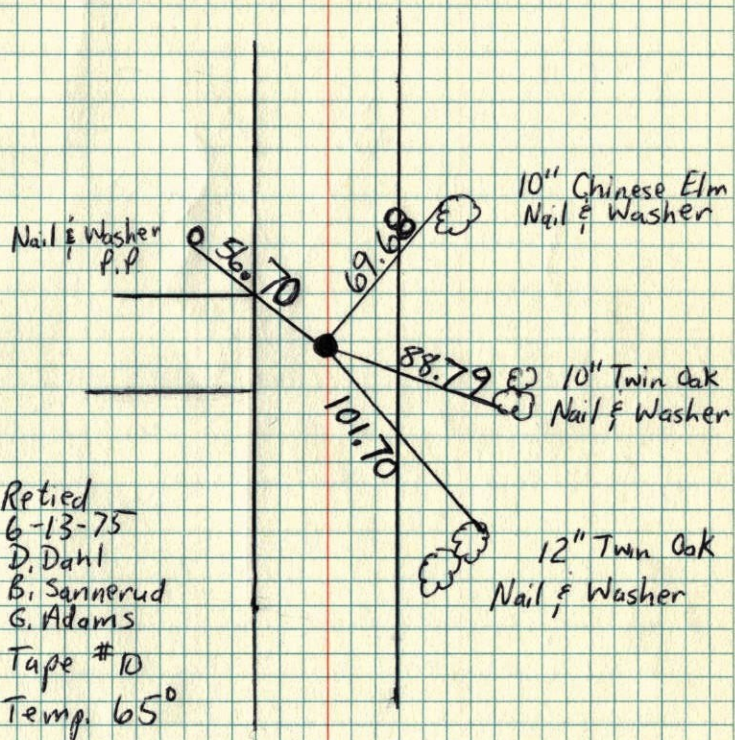
Retie
June 13 1975
D. Dahl
B. Sannerud
G. Adams
Tape #10
Temp. 65°

ROLAND W. ANDERSON
COUNTY SURVEYOR
ANOKA COUNTY, MINNESOTA

TEMPERATURE CORRECTED
AND HORIZONTALLY
TAPED MEASUREMENTS

N¹/₄ Cor. Sec. 28 - T. 32 - R. 23⁹⁶

Granite Mon. down 2'
Placed Cast Iron Mon. flush
PK's 2.00' North and East



Retied
6-13-75
D. Dahl
B. Sannerud
G. Adams
Tape #10
Temp. 65°

Redraw

93

6-13-75

N 1/4 Cor Sec 28-T32-R23

Granite Mon down 2'

Placed Cast Iron Mon. flush

PK's 2.00' North + East.

D.I.D.

Retie 5-5-71
R. Brien
J. Boettcher

Nail & Washer
P.P.
50.20

County Rd. # 52

10" Chinese Elm

Nail & Washer
F.P. (New)

10" Trwin

DIRT ROAD
7/6/60

Bill Rogers
Kandy Carlson

Retie 7/20/64

M. D. Anderson
R. Carlson

69.68

33.72

88.79

20.78

Nail & Washer
14" Oak

Nail & Washer
8" Oak

101.70

Gone New Nail & Washer

Nail & Washer
10" Oak

TEMPERATURE CORRECTED
AND HORIZONTALLY
TAPED MEASUREMENTS

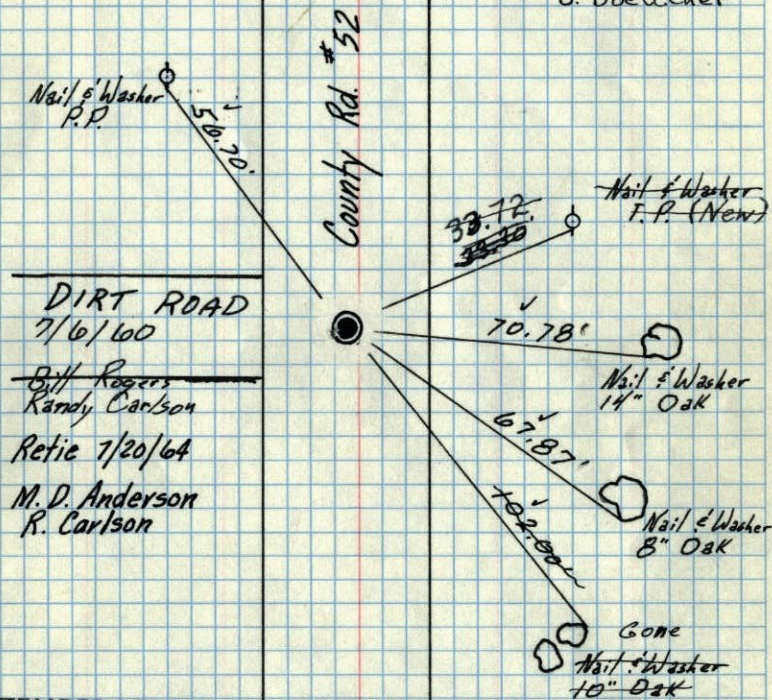
Tie Check
Aug. 3, 1966
H. Larson
D. Potter
G. Reimer

ROLAND W. ANDERSON
COUNTY SURVEYOR
ANOKA COUNTY, MINNESOTA

96
N 1/4 Cor. Sec 28 - T32 - R23

Granite Mon down 2'
Placed Cast Iron Mon. flush
PK's 2.00' North + East.

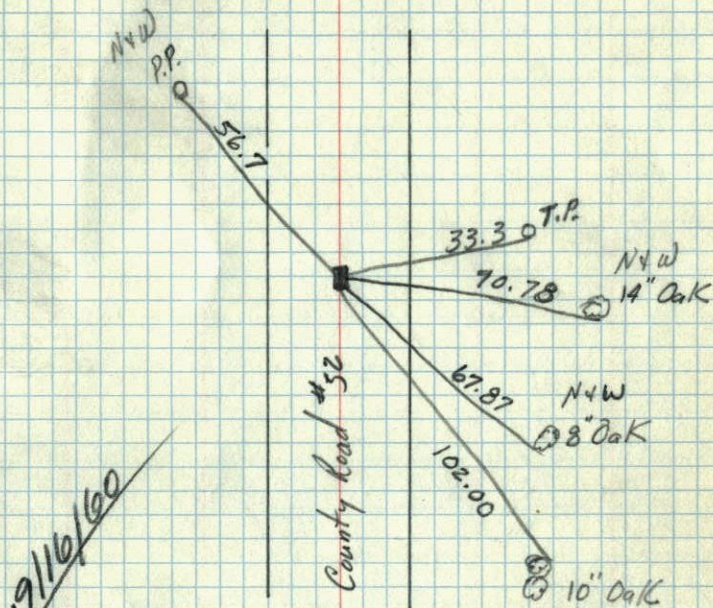
Retie 5-5-71
R. Brien
J. Boettcher



TEMPERATURE CORRECTED
AND HORIZONTALLY
TAPED MEASUREMENTS

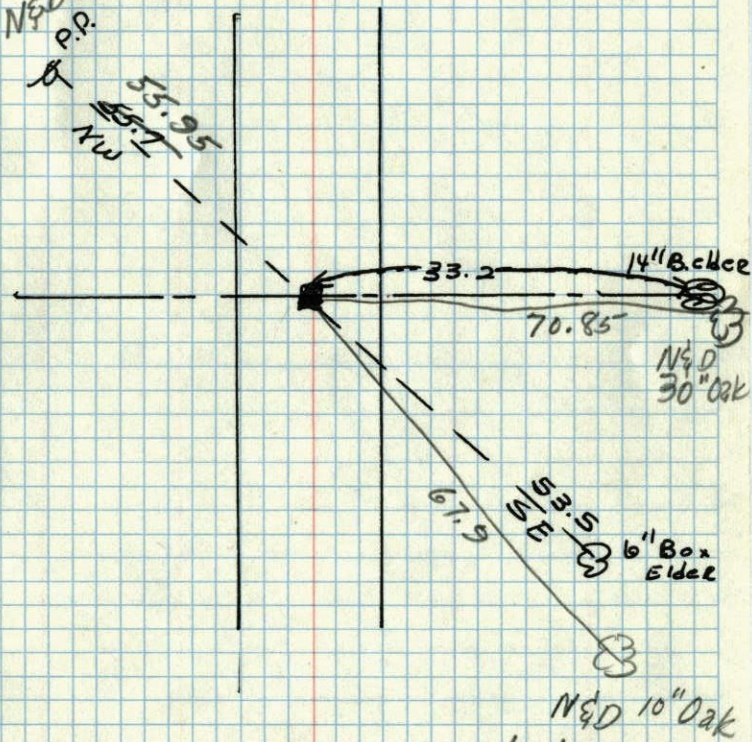
ROLAND W. ANDERSON
COUNTY SURVEYOR
ANOKA COUNTY, MINNESOTA

N 1/4 Cor. Sec 28 T32 R23
Granite down 2'



TC
Temp. 72°
7/6/60
Bill Rogers
Randy Carlson

N
28 ✓
3/4 CORNER of Sec. 21 Ham Lake Twp



8/10/59
Co. Hwy. Dept.

Anoka Co. Hwy Dept.